

# MOVEMENT



## CORPORATE HEALTH

The decisive factor in today's strategic corporate management and how it can succeed.

## MADE IN GERMANY

Find out how customised ergonomic solutions and uncompromising quality make all the difference.



About us 04-05

The problem – Aeris, the solution 06-11

Made in Germany 12-15

The Aeris Active Office 16-19

Aeris projects 20-27

Office Chairs 28-45

Conference Chairs 46-61

Standing Chairs, Desks + Mats 62-73

Because New Work doesn't  
work on old furniture.

## About us

25 years of healthy, energetic offices. At Aeris, our family-owned company, we design each of our products with the comfort and well-being of the user at the centre. Our philosophy is based on the belief that a healthy work environment is the foundation for productivity and satisfaction.

By integrating innovative ergonomic solutions, we are able to design workstations that not only support physical health, but also promote mental well-being. Our products are designed to support the body's natural movements, prevent muscle tension and improve circulation.

The results are working environments that significantly increase employee satisfaction, reduce stress and increase the commitment and motivation of the workforce. With our ergonomic solutions, we help to ensure that employees feel comfortable in their working environment and can perform at their best.



# THE PROBLEM:

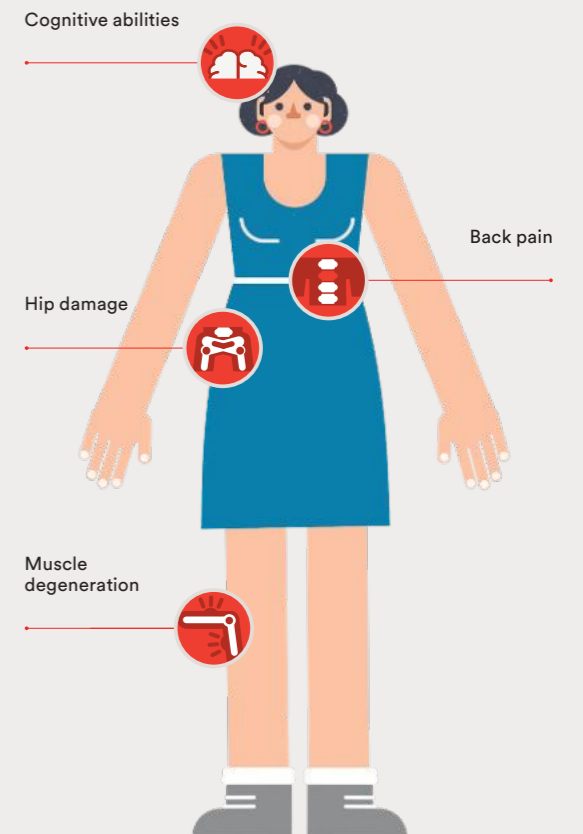
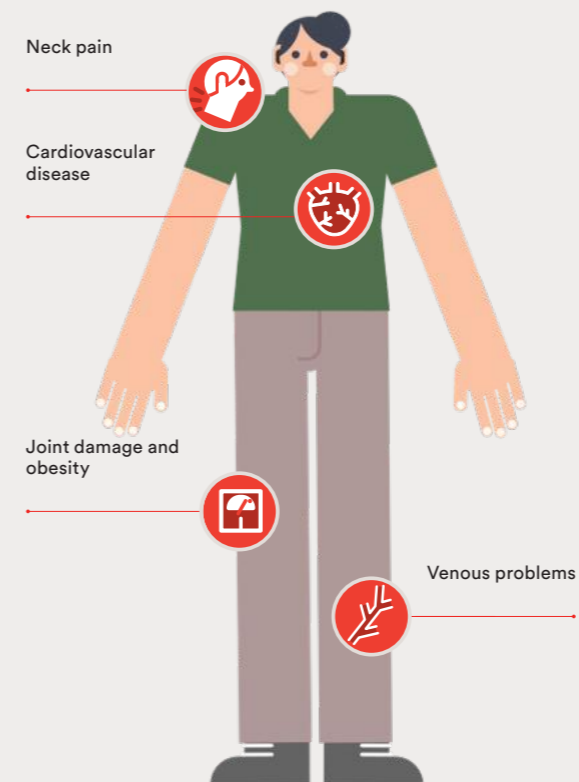
## WE SIT TOO MUCH AND GET NOT ENOUGH MOVEMENT!



## A STATIC WAY OF LIFE IS HARMFUL TO OUR HEALTH.

Lack of movement robs us of our concentration, energy and creativity after just a short time. Almost all modern diseases of civilisation, such as diabetes, cardiovascular diseases, back pain and many others, can be traced back to a drastic lack of movement. 80% of all employees have experienced back pain at some point in their working lives.

On average, we only spend 3-4 hours a day being active. The rest of the time, we spend in a seated position. The reason for this is simple: our workplaces are designed so that we have to move as little as possible. Even if we do additional sports or take the bike to work, we still sit for most of the day. Another problem: the home office trend is making this situation even worse.



# WE HAVE TO ACT!

**9,2** HR SITTING

is how much time Germans spend at work each day. That's half an hour more than in 2021 and over 1.5 hours more than in 2015.<sup>1</sup>

**1500** STEPS

is the average distance travelled each day by employees today. By comparison, our ancestors in the Middle Stone Age covered around 17 kilometres a day in search of food.<sup>2</sup>

**96.7** MIL SICK DAYS

were caused by back pain in Germany in 2022. That is more than half as many as in 2013.<sup>3</sup>

**31** % MENTALLY ILL

Almost a third say that they are currently suffering from depression, anxiety disorders or other mental illnesses. Among those under 25, the proportion is as high as 41 per cent.<sup>4</sup>

**12,4** BN. EUR PRODUCTION DOWNTIME COSTS

The number of days lost due to back pain in the German economy in 2022.<sup>5</sup>

# THE EFFECT OF THE AERIS ACTIVE OFFICE CONCEPT

**40** MIN

less per day you sit at a workplace equipped with Aeris products.<sup>6</sup>

**82** %

felt more comfortable and relaxed at an Aeris workstation.<sup>6</sup>

**75** %

felt more focused and productive than at a conventional workstation.<sup>6</sup>

A 15% improvement in reaction time achieved by Aeris products leads to a measurable increase in labour productivity. Overall, productivity could be increased by 10% and the error rate reduced by 15%.<sup>7</sup>

# THE

# SOLUTION

## OUR MOVEMENT PHILOSOPHY



At Aeris, we enable movement exactly where you least expect it, but most need it – when sitting and standing. Our products use the patented Aeris 3D technology. This enables movement in all three dimensions: back and forth, to the sides and – uniquely at Aeris – up and down.

We owe our undisputed leadership in the field of dynamic seating to this 3D technology, which Aeris developed over 25 years ago for the Aeris Swopper. Since then, we have implemented this technology in many other products and added even more unique and innovative developments over the years. With an eye on more...

# High-tech products

Our product designs are always developed in close consultation with our engineers. This is the only way to ensure that our proven technologies enhance the design language of the chair instead of disrupting it. High-performance materials are used that fundamentally contribute to the functionality of the products.



# Handmade in Germany

All our products are hand-assembled in Germany and undergo careful quality control. This not only ensures consistently high quality, but also enables us to respond quickly to specific customer requests and guarantee speedy delivery.



# Durability and repair

Quality and durability are our top priorities. However, should a problem arise, our products are designed in such a way that almost all of them can be repaired. Our Aeris repair service is available to ensure that Aeris products accompany the user for many decades.

We source our materials mainly from Germany, particularly from the area near Munich, and a small proportion from neighbouring countries. Short delivery distances ensure efficiency and environmental friendliness. Our products are based on recyclable and recycled materials.



# Climate neutrality and certificates

Environmental protection and sustainability are at the top of our agenda. In 2007, solar cells were installed during the construction of our production hall, and we have been constantly expanding their area ever since. We now generate more energy than we need for our own use.

The majority of the textile products used in Aeris products have the Ecolabel, an EU environmental label that stands for environmentally friendly products and services. In addition, the wood we use comes from FSC-certified forests.



# THE AERIS

HOW CORPORATE HEALTH CAN REALLY WORK.

Corporate health is not a new concept, but it is increasingly becoming the focus of holistic development of attractive working environments. It is about recognising and actively using the connection between employee and corporate health. The win-win formula is: 'If the employees are doing well, the company is doing well.' This includes a wide range of activities to promote physical, mental and social health. Corporate health is therefore a fundamental task of strategic corporate management. With Aeris products, this concept can be implemented in each area of an office individually, contributing to the maintenance of mental and physical well-being.



# ACTIVE

# OFFICE

## Stand-Up Meeting and Creative Conference

The aim of meetings and conferences is to make them as informative and productive as possible, in order to make good use of the valuable working hours. The choice of rooms and furniture plays a central role in this. Aeris Swopper, Aeris Numo Comfort and Aeris Muvman bring movement into every meeting, help to create a relaxed atmosphere and, in addition to health, also promote creativity.



## Welcome and Wellness

Break rooms are also becoming more diverse. Kitchens, coffee bars and counters integrated into the concept satisfy more than just physical needs. They become reception and meeting areas, serve as spatial figureheads and as break-out zones for temporary work. Keeping the body gently in motion on the Aeris Numo Comfort is only logical if you want employees and guests to feel completely at ease.



## Flex Office and Active Work

Desk sharing and flex zones are becoming more and more common in companies due to the decline in face-to-face working hours. The Aeris Numo Task impresses here with its simple adjustment options and movement-promoting properties.

Many people still spend the majority of their working day at a desk in the office or home office. Accordingly, this area offers the greatest leverage in terms of our health at work. The more movement incorporated into our routines, the greater the benefit. Cyclically switching between standing, sitting and stand-sitting is a central approach here. Our Aeris Active Office Desk, the Aeris Muvmat, the Aeris Muvman and an Aeris office chair of your choice optimally support this movement concept.



## Active Lounge

Central areas accommodate various functions and serve as places for exchange and recreation. These areas should be designed to be correspondingly flexible. Here, too, the Aeris Swopper is ideal with its versatility, and the Aeris Oyo invites you to relax dynamically. Movement deepens breathing, supports regeneration and general well-being.



# PROJECT ILYSSIA

20

For over 25 years, the Ilyssia restaurant has been synonymous with fine Greek cuisine. As part of the renovation in 2025, we were asked to furnish the entire seating area with our Aeris Numo designer chair, creating a stylish new ambience.

## 01

The Aeris Numo on the elegantly designed terrace blends harmoniously into the overall concept of design, comfort and atmosphere.



## 02

21

Inside the restaurant, the Aeris Numo also emphasises the modern interior design and gives the room a contemporary yet cosy atmosphere.

## 03

Even in the entrance area to the terrace, the Aeris Numo attracts attention with its striking design. As a stylish highlight, it makes a statement and invites guests to take a seat and enjoy the special ambience.



# PROJECT NEUE DENKEREI

22

Since 2018, the Neue Denkerei in Kassel has been offering over 800 m<sup>2</sup> of inspiring spaces that stand out from the crowd just as much as our active chairs. As part of our collaboration, we had the opportunity to furnish a wide variety of work scenarios and help shape the special atmosphere of this location.

## 01

Equipped with the Aeris Numo Comfort with sled base, this conference room offers the perfect combination of design and comfort – ideal for creative and productive meetings.



23

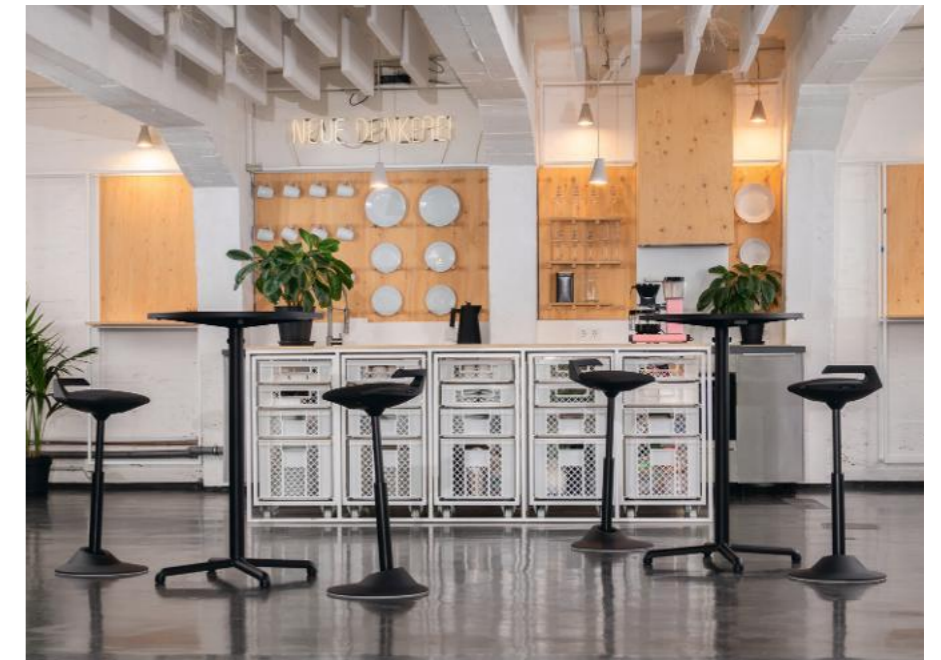
## 02

With its innovative technologies, the Aeris Numo Task fits perfectly into this exceptionally creative working environment – not only complementing the space, but also enhancing its inspiring effect.



## 03

Exercise is also important during breaks – that's why our products, such as the Aeris Muvman, are even used in modern kitchenettes as flexible bar stools, where they impress across the board.



# PROJECT District One

24

District One in Berlin-Schöneberg offers around 2,000 m<sup>2</sup> of modern, flexible workspaces. The concept combines open-plan coworking areas with private offices and meeting rooms. Our collaboration involved furnishing various workplace scenarios, tailored to the functional and aesthetic requirements of the site.

## 01

In this Workspace Lounge, the Aeris Numo Comfort on a sled base ensures comfort in an environment designed to encourage open communication and collaboration.



## 02

25

The AERIS Linu Conference chair with a base brings movement and a sense of lightness to this open, urban working environment. With its clean lines and flexible seating dynamics, it supports focused meetings – a chair that echoes the architectural clarity of the space and combines it with a palpable sense of vitality.

## 03

The AERIS Muvman is used in the bar area for quick stops and informal chats, whilst the open-plan workspace, featuring the AERIS Active Office Desk and the AERIS Numo Task chair, provides a space for focused, active working.



# PROJEKT Martin&Klein

26

Martin&Klein GmbH is a marketing, branding and advertising agency based in Salzburg that helps companies refine their public image and strategically develop their marketing and sales strategies. We provided the seating for their new office premises. The result is a modern, functional office design that optimally supports creative work, concentration and team communication.

## 01

Whilst the Aeris Numo Task provides comfortable, adjustable seating for individual workstations in the open-plan office, the Swopper, positioned in the centre of the room, deliberately encourages movement and creative use – in harmony with the architecture and colour scheme.



## 02

27

Structural partitions and seating solutions that encourage movement, such as the Aeris Numo Task, create a balance between openness and concentration in open-plan offices.



## 03

Minimalist materials and the Aeris 3Dee executive chair define an executive office that makes a statement and incorporates movement.



# OFFICE

Our office chairs are more than just pieces of furniture. They are daily companions for a more active and healthier working life. With their ergonomic design, they offer comfort and freedom of movement to keep you moving all day long. Concentration and productivity go hand in hand with unique seating comfort. Aerus office chairs offer more than just a place to sit.



# CHAIRS

# Overview

01. Aeris Swopper



02. Aeris Numo Task – column with castors



06. Aeris Linu Task – column with castors



03. Aeris Numo Task – spring strut with castors



07. Aeris Linu Task – spring strut with castors



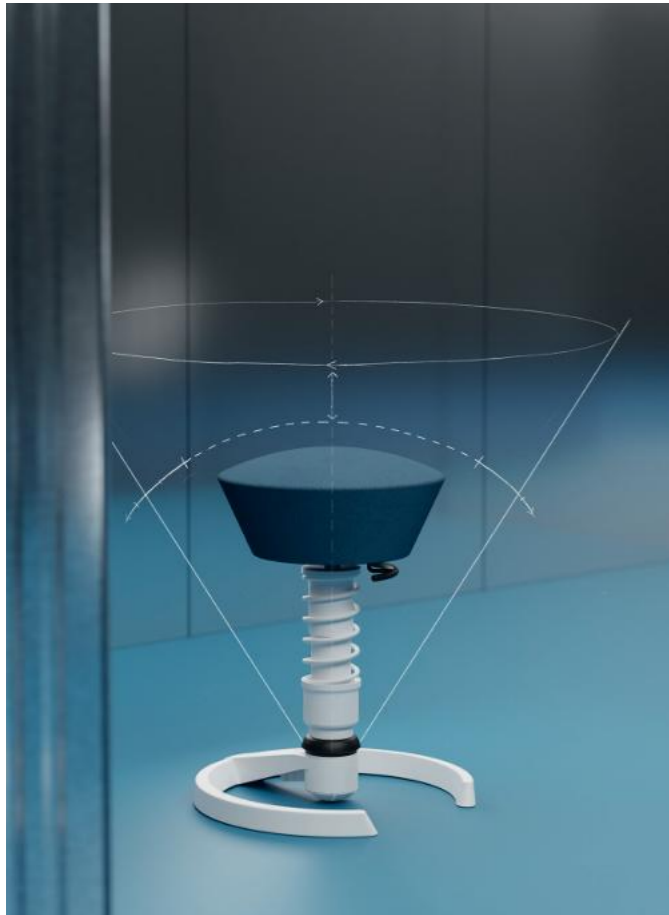
04. Aeris Numo – 4-star base with castors



05. Aeris 3Dee



# Aeris Swopper



A revolution in seating: as the first three-dimensionally movable office chair, it has fundamentally redefined the way we work. The patented 3D technology enables movement in all three dimensions: forwards, sideways, backwards and – unique to Aeris – up and down. This so-called vertical swinging relieves the intervertebral discs, makes it easier to stand up, promotes blood flow and stimulates the circulation.

The active chair has no backrest at all, which means that – thanks to its design that encourages movement – the back muscles are automatically trained. The wide base with a joint close to the floor ensures stability and allows 360-degree mobility. The convex seat supports an upright posture and prevents pressure on the seat edges.

Its striking design combines exclusivity with functionality, making it a popular element in contemporary office spaces.



# Aeris Numo Task column with castors



The lightweight office chair offers an outstanding combination of innovative swinging kinematics and the unique Self-Adjusting-Motion element. This element provides every user with even, pleasant deflection in all directions – regardless of weight. This promotes dynamic sitting, which helps to strengthen the muscles and improve blood circulation.

The retrofittable backrest cushion with integrated lumbar support relieves the back and promotes an upright posture. Thanks to the practical clip-in mechanism, the backrest cushion can be easily installed and removed. The high-quality universal castors enable smooth mobility on different floor coverings, such as carpet, parquet or tiles.

Thanks to its flexible range of uses, the office chair is ideal for modern working environments where mobility and adaptability are required. Whether in an open-plan office, a home office or a co-working space – this chair adapts perfectly to your needs and requirements.



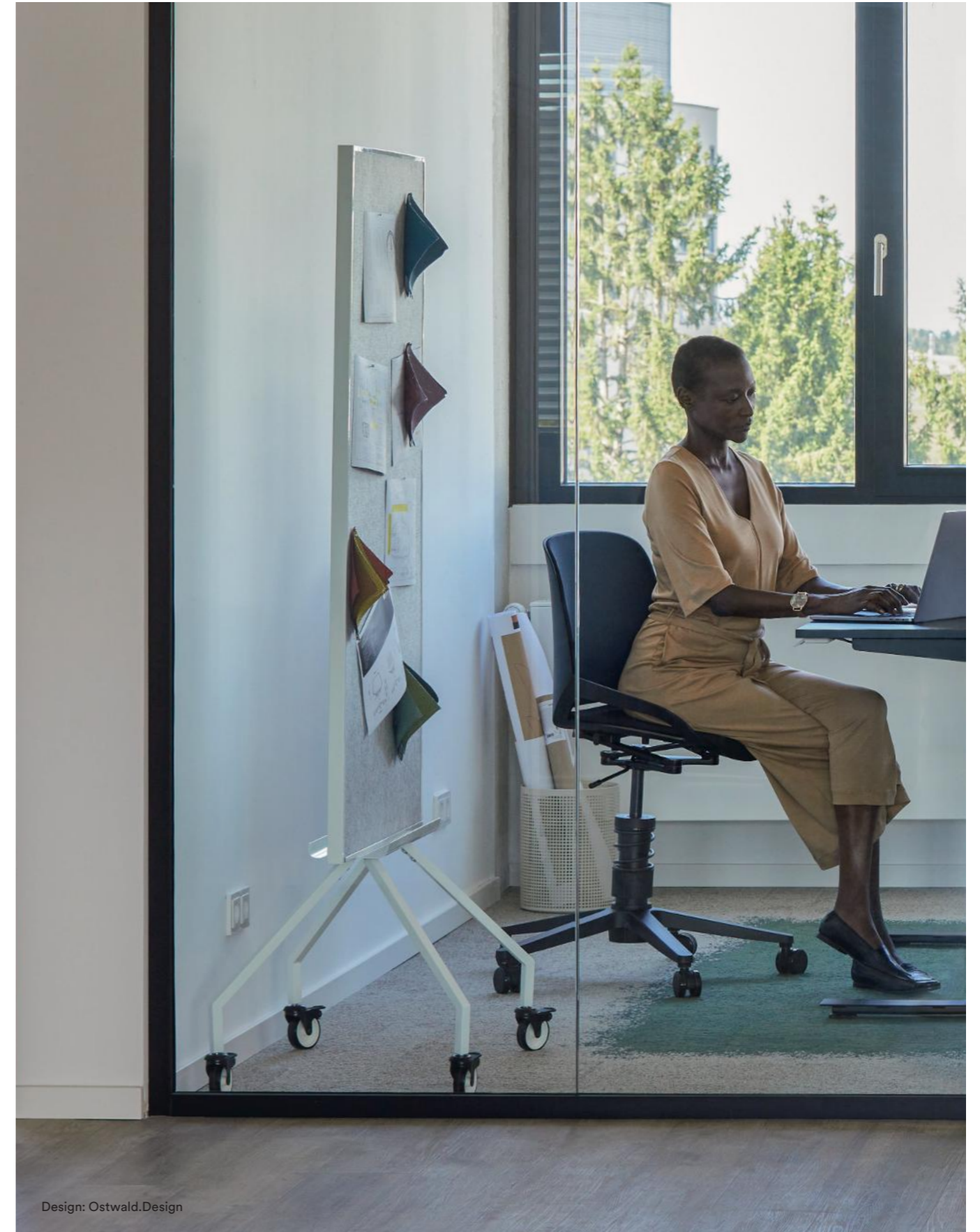
# Aeris Numo Task spring strut with castors



The spring strut below the seat kinematics extends the range of motion in the vertical plane. This not only allows for gentle yielding during vertical movements, but also supports the body's natural freedom of movement, which significantly reduces tension and fatigue.

The flexible seat shell, equipped with the patented Aeris kinematics and the self-adjusting motion element, allows for complete 360° mobility. Optionally, the Aeris Numo Task can also be equipped with glides that provide an even better grip. The improved stability brings out the motion technologies even better.

The elegant seat shell, combined with the appealing lamella design, makes this ergonomic office chair a real eye-catcher in any working environment.



# Aeris Numo

## 4-star base with castors



The minimalist office chair impresses with its functional features. Equipped with high-quality castors, this chair offers both mobility and stability. The castors allow for effortless and smooth movement on different floor coverings, be it carpet, parquet or tiles. At the same time, the chair's robust construction ensures that it remains firmly and securely in place without wobbling.

Thanks to the patented Aeris kinematics, the seat shell allows for gentle tilting movements forward and backward. This innovative technology promotes a dynamic sitting posture and helps to activate the muscles. This improves blood circulation and reduces the risk of tension, contributing to a more comfortable and productive work experience.

The simple, modern aesthetics of the office chair blend harmoniously into any office interior and are ideal for both home offices and open-plan offices.



# Aeris 3Dee



The half-height backrest is equipped with an innovative lamella technology and an integrated lordosis curvature. The lordosis curvature in the backrest is specially designed to follow the natural curves of the spine, thus providing ideal support. The convex seat has a flexible front edge that prevents pressure points and blood congestion in the thighs.

The Aeris spring strut, in combination with the SAM-V motion joint, enables flexible movement in three dimensions. This creates a dynamic sitting position that supports natural body movements, activates the muscles and promotes blood circulation. Thanks to its sensitive cushioning, the suspension strut noticeably reduces strain on the spine and provides greater relief when sitting.

The unique shape of the backrest and the slightly convex seat cushion give the executive chair a striking presence and make it a real eye-catcher in any office environment.



Design: Tobias Caratiola

# Aeris Linu Task column with castors



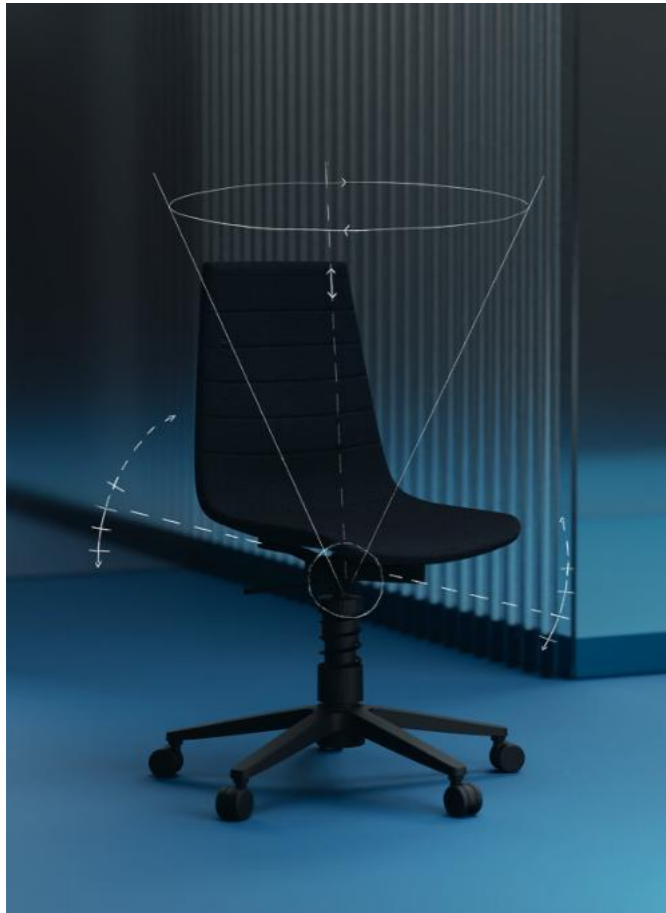
An integrated lumbar support in the ergonomically shaped backrest specifically relieves pressure on the spine and promotes a healthy, upright sitting posture. The gently sloping front edge of the seat prevents pressure points on the thighs and effectively protects against restricted blood circulation in the legs.

Aeris' innovative Flex kinematics allow for an exceptionally high degree of freedom of movement in all directions – forwards, backwards and to the sides. This two-dimensional mobility intuitively adapts to the body's natural movements, enabling dynamic sitting that promotes muscle activity and thus prevents tension.

With modern longitudinal quilting in the backrest padding and an elegantly tapered backrest, this designer chair combines stylish aesthetics with functional requirements – ideal for use in any contemporary office environment.



# Aeris Linu Task spring strut with castors



The unique Aeris strut provides vertical momentum and forms the basis for an active sitting experience. Combined with Aeris Flex kinematics, which allows maximum freedom of movement forwards, backwards and sideways, this creates a dynamic 3D sitting experience that keeps the entire body in motion.

The backrest cushion with integrated lumbar support specifically relieves pressure on the spine and promotes an upright sitting posture. The gently rounded front edge of the seat also effectively prevents pressure points and possible impairment of blood circulation in the legs.

The office chair combines a precisely shaped seat shell with a narrow backrest, thus combining stability with a light, understated aesthetic – functional and agile in its expression.



# CONFERENCE

Our versatile conference chairs are not just for meetings. They can be seamlessly transformed into co-working and lounge chairs that offer flexibility and comfort in any work environment. With their appealing design and ergonomic features, they promote productivity and relaxation in equal measure. Chairs that adapt to your individual working style and bring a breath of fresh air into any room.



# CHAIRS

# Overview

01. Aeris Numo Comfort – 4-star base with glides



02. Aeris Numo Comfort – skid base



03. Aeris Numo Comfort – wooden legs



04. Aeris Numo Task – column with glides



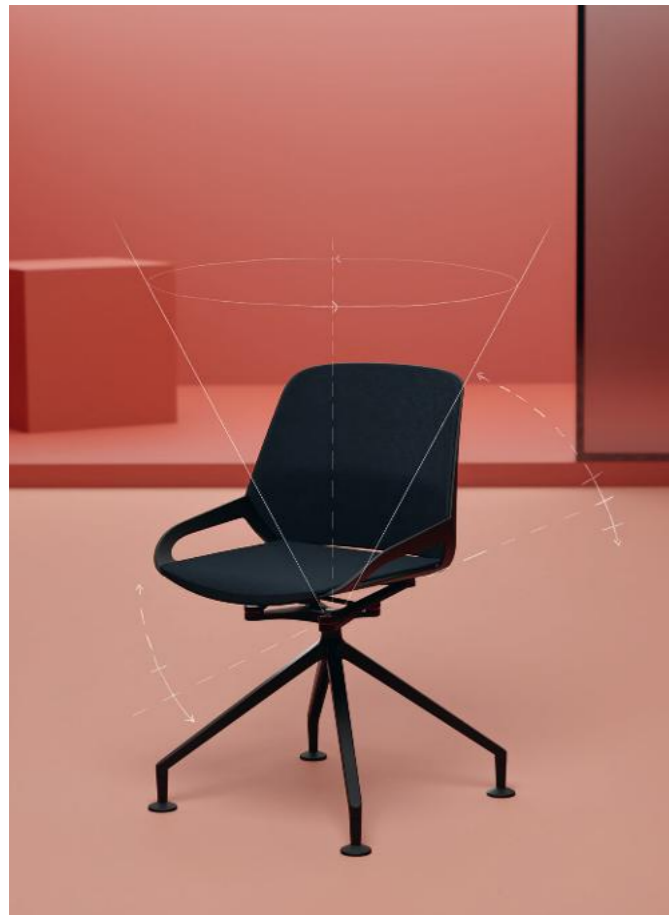
05. Aeris Linu Conference – skid base



06. Aeris Linu Conference – 4-star base with glides



# Aeris Numo Comfort 4-star base with glides



The generously sized seat shell can be fully upholstered for the ultimate in comfort. The backrest cushion, with a practical clip-in mechanism, can be unclipped if necessary to allow good ventilation of the back. The front edge of the seat cushion features Aeris Flexzone technology, which prevents pressure points from the front edge of the seat.

Two patented kinematics allow the seat shell to adapt to the body's forward and backward movements. This results in a more upright posture and promotes blood circulation. The stable base is extremely steady and the seat can be rotated 360°.

With its slim lines and minimalist approach, the conference chair fits seamlessly into any office interior. Its elegant design makes it an eye-catcher that embodies professionalism and style without sacrificing functionality.



# Aeris Numo Comfort skid base



The skid-base frame gives this casual variant of the Aeris Numo Comfort series particular versatility. Thanks to the special design, which allows for forward and backward movement, this active chair offers excellent seating comfort – both in conferences and when working at a table. The lumbar support in the optional backrest cushion provides additional comfort.

The proven Aeris Flexzone technology ensures that the front edge of the seat is flexible. This effectively prevents uncomfortable pressure points and reduces discomfort in the thighs.

The universally applicable skid base frame is ideal for both indoor and outdoor use. The curved metal frame, made from a single piece, gives the piece of furniture an extraordinary elegance. Its seamless form gives every room and outdoor area a modern and stylish flair.



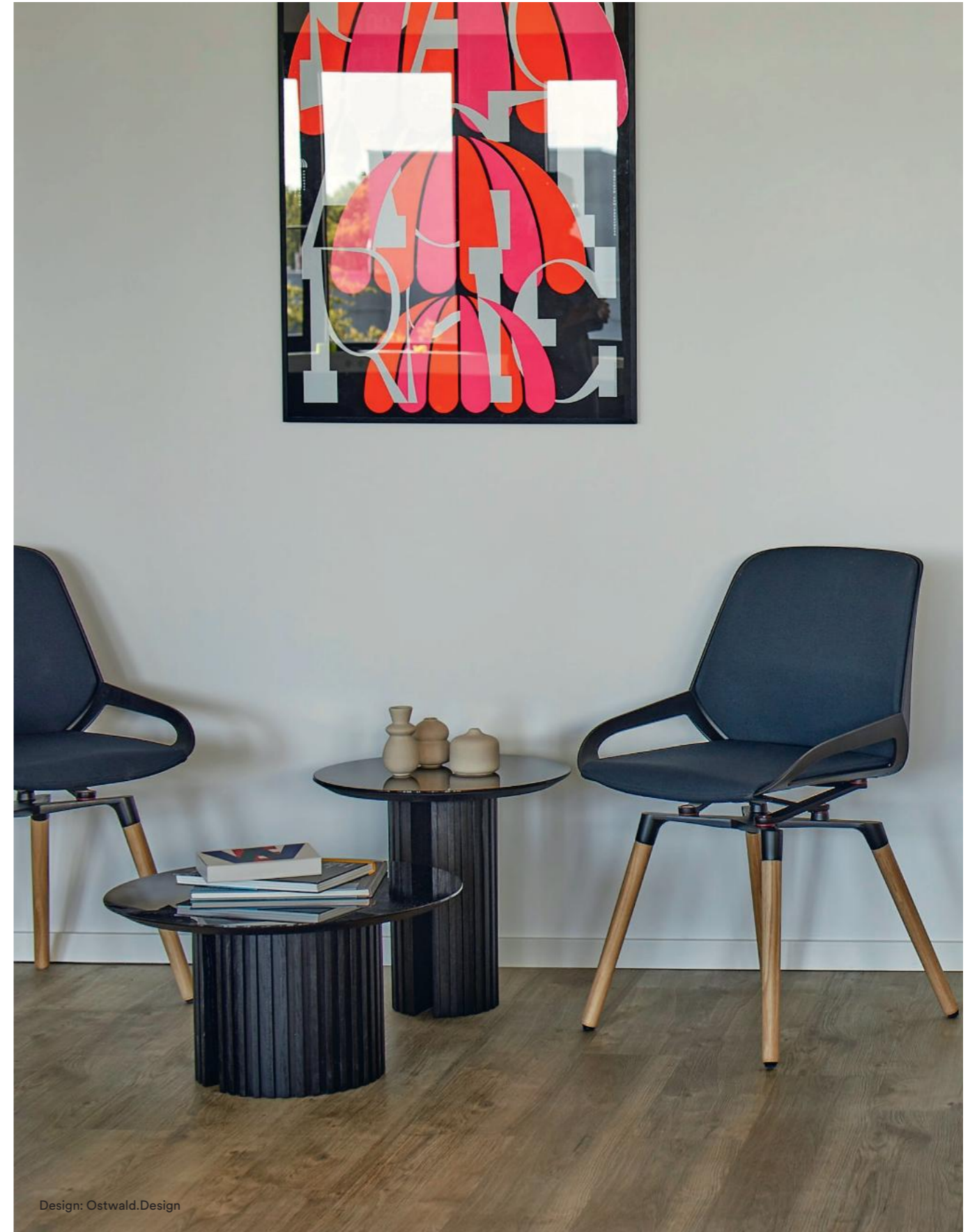
# Aeris Numo Comfort wooden legs



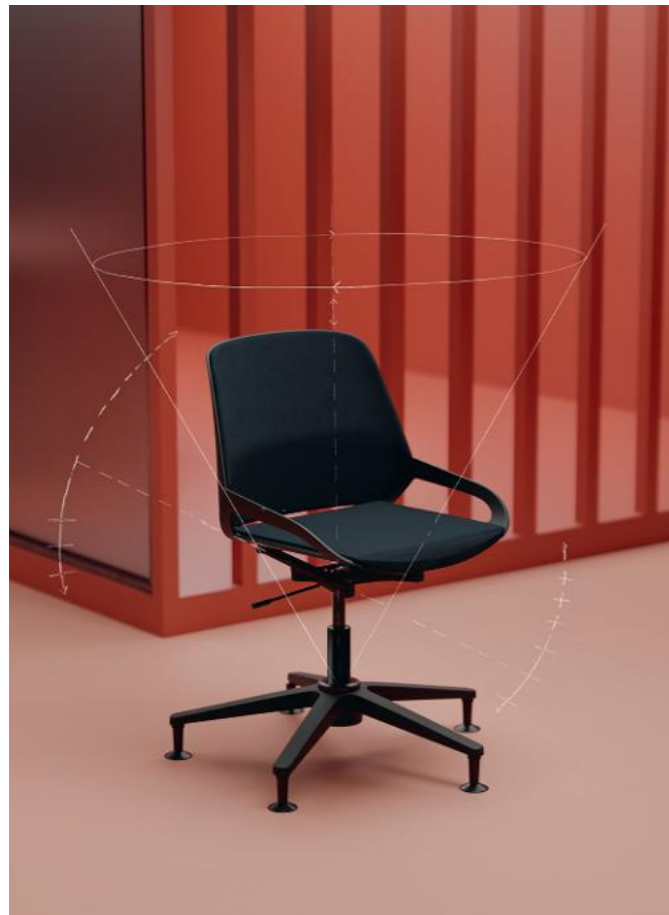
The welcoming conference chair impresses with its appealing design and proven Aeris technologies. The Aeris kinematics ensure a pleasant movement back and forth. The backrest in lamella optics ensures good air circulation at the back in the version without backrest upholstery.

The flexible zone at the front of the seat prevents unpleasant pressure points and blood congestion in the thighs. The retrofittable back cushion with a practical clip-in mechanism is equipped with a lumbar support. This relieves the back and supports an upright posture.

The wooden legs give this version a warm and inviting look that is particularly suitable for lounge and waiting areas. The natural grain and colour of the wood give the chair a timeless elegance that fits seamlessly into a wide range of interior designs.



# Aeris Numo Task column with glides



The gliders give this variant extra stability. The SAM joint inside the base ensures a comfortable lateral deflection. Together with the Aeris kinematics, this creates a completely new sitting experience that leads to less back pain and more productivity.

The lumbar support in the back cushion relieves the back and provides additional comfort. The flexible front edge of the seat cushion promotes good blood circulation to the tips of the toes.

The slim silhouette conceals the complex mechanics that make the chair so versatile and flexible. This harmony between form and function is reflected in every aspect of the chair, from the curved backrest to the elegant glides. This makes this active chair a desirable piece of furniture in any environment where creative work is the main focus.



# Aeris Linu Conference skid base



The innovative skid base makes this model a particularly versatile companion for everyday work. The specially developed design allows for gentle forward and backward movements, thereby promoting dynamic sitting behaviour.

The backrest has been ergonomically designed and, thanks to its integrated lumbar support, provides noticeable relief for the lower back. This not only promotes an upright posture, but also effectively prevents fatigue during prolonged sitting. In addition, the gently sloping front edge of the seat ensures that there is no uncomfortable pressure on the thighs.

The organically shaped seat and backrest, combined with the elegantly curved sled base, bring a calm, stylish dynamism to the room and give the chair a contemporary look. Clearly defined lines create a high-quality presence that blends seamlessly into sophisticated interior design concepts.



# Aeris Linu Conference 4-star base with glides



This particularly stable model with glides is ideal for the highest demands in conference rooms. The advanced Aeris Flex kinematics not only allow forward and backward movement, but now also sideways movement. This keeps the body in continuous, natural motion while working.

The integrated lumbar support in the back area specifically relieves pressure on the lower back and ensures all-round comfort. The softly rounded front edge of the seat promotes healthy blood circulation – even during prolonged sitting.

The elegant base combined with the stylish glides gives the chair a minimalist, light appearance. The technically impressive kinematics add a modern touch and blend discreetly and harmoniously into any room concept.



# STANDING

Our sit-stand chairs, standing mats and standing tables are the perfect addition to an active working style. The sit-stand chair makes it easy to work standing up, promotes blood circulation and reduces fatigue. The standing mat provides additional comfort and takes the strain off your legs when standing for long periods. Combined with our unique standing tables, they create an ideal working environment that promotes more movement and health in your daily work.

# DESKS

# CHAIRS MATS



01. Aeris Muvman



02. Aeris Muvman Industry



03. Aeris Muvmat



04. Aeris Active Office Desk



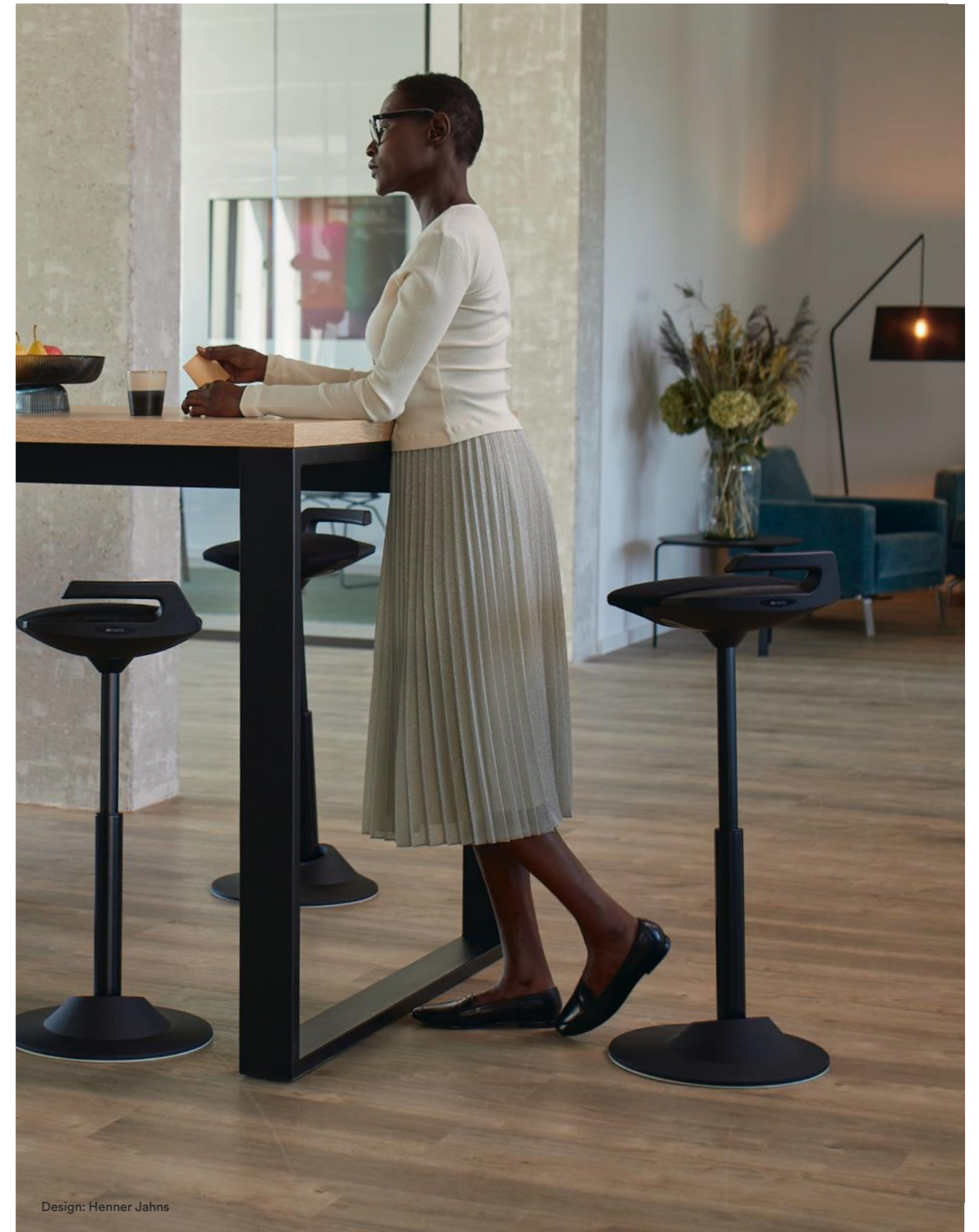
# Aeris Muvman



Sit-stand with a variable height adjustment range of 33 cm. The multidimensional movement element in the base plate ensures maximum lateral mobility, extends the reach and supports an optimal posture in relation to the work surface. The flexible centre column of the ergonomic sit-stand chair promotes continuous micromovements that supply the intervertebral discs with nutrients.

The slightly curved seat with Flexzone technology not only prevents pressure points, but also poor posture when standing or sitting, thus ensuring good blood circulation right down to the tips of your toes.

Thanks to its practical carrying handle and slim design, this sit-stand desk is ideal for all workplaces where flexible working methods are required. It can be easily transported and, thanks to its compact design, fits easily into different environments. This makes it the perfect companion for modern, dynamic working environments where mobility and adaptability are crucial.



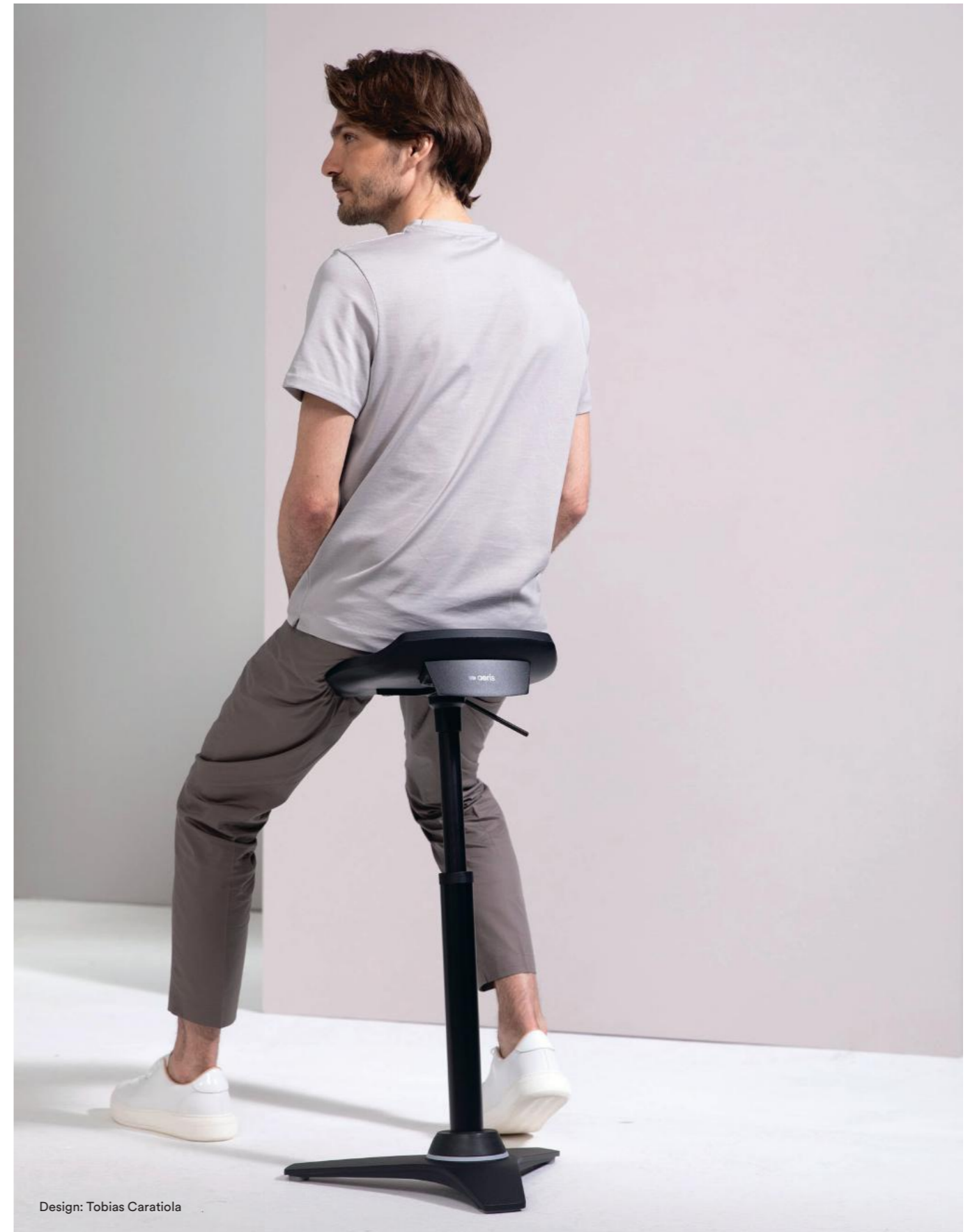
# Aeris Muvman Industry



This sit-stand chair is made of robust materials and has an easy-to-clean surface. The durable materials guarantee a long service life and ensure that the sit-stand chair works reliably even in demanding conditions.

The centre column, which is inclined at an angle of 4°, supports an upright posture and helps to relieve the intervertebral discs. The movement element inside the foot plate allows lateral mobility and thus extends the gripping range.

Thanks to its space-saving design and extremely easy-care materials, this sit-stand desk is perfect for all production locations.



Design: Tobias Caratiola

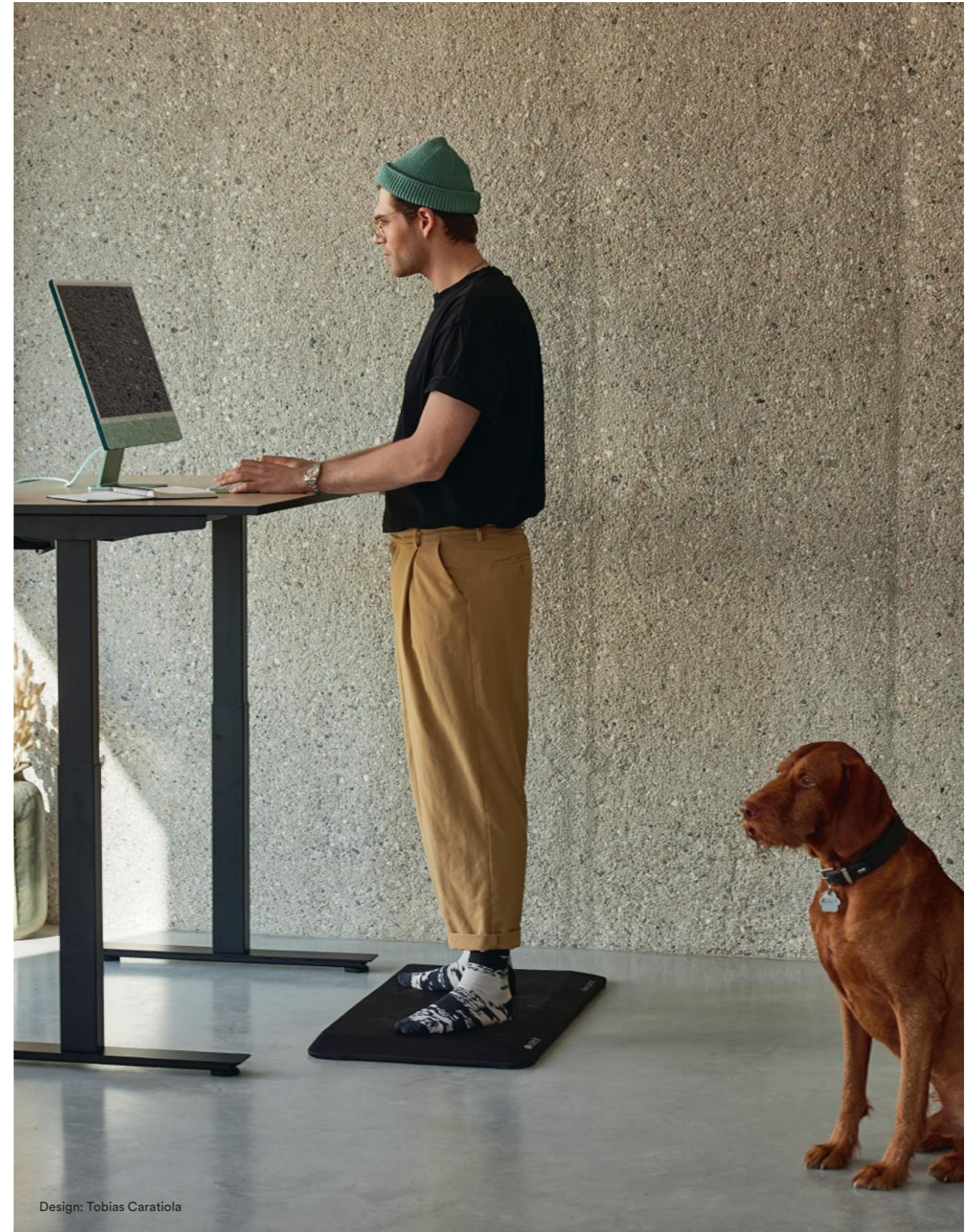
# Aeris Muvmat



The standing mat has a unique, topographical 3D structure that gives the feet the feeling of standing on forest soil – or, more precisely, on roots, stones and soft moss. This specifically activates the foot reflex zones, the muscles and the circulation, which has been shown to improve concentration.

The resilient and relieving foam cushioning inside the mat ensures a comfortable standing position and at the same time protects the joints. The bevelled edges in combination with the non-slip pad on the underside of the mat provide safety and optimal grip.

Whether you are wearing shoes, barefoot or in socks – in the office, on the production line, in the laboratory or simply at home: the anti-fatigue mat is effective wherever long periods of standing are unavoidable or desirable.



# Aeris Active Office Desk



The height-adjustable double desk is equipped with separate standing and sitting work surfaces. This makes it possible to switch seamlessly between standing and sitting without having to interrupt your work. Studies confirm the positive effects of active working: reduced back pain and muscle tension, a strengthened cardiovascular system, improved concentration, increased productivity and more creativity.

The flexible design allows the standing work surface to be mounted on the right or left, depending on your preference. The practical cable trays, coupled with the cable management, ensure order.

The natural, organic shape with rounded edges makes the double desk a real eye-catcher in any setting. With its numerous combination options, this table combines the characteristics of a modern piece of designer furniture with the greatest possible functionality.



Design: Henner Jahns

# Bibliography and contact details

Aeris GmbH  
Hans-Stießberger-Straße 2a  
85540 Haar  
Germany

+49 (0) 89 - 900 506 - 0  
info@aeris.de  
www.aeris.de

Image editing and content  
Aeris GmbH

Design | Art Direction  
MortarPestle.Studio

## Sources of figures:

- 1 DKV, 2023, 2015
- 2 Andreas Butz, Manager Magazin 2021
- 3 AOK, 2023
- 4 AXA, 2024
- 5 AOK, 2023
- 6 Müller-Bayreuth, 2019 / EEG 2017
- 7 Müller-Bayreuth, 2019 / EEG 2017, Paula Waibl 2018



Never just sit.

