





Aeris Oyo

Product information



Product information

A chair and its user
rarely suit each other this well.



Aeris Oyo Product information

Aeris Oyo

The Aeris Oyo is a unique combination of saddle chair, rocking chair and cantilever chair that will make any design lover's heart beat faster. The curved shell shape not only looks breathtakingly good, but also invites you to sit in different positions. Whether forwards, sideways or even backwards. With the Aeris Oyo, you are always sitting in the right position.



Product information



The skid frame of the Aeris Oyo enables a rocking movement that is not only fun, but also keeps the mind stimulated and alert. Thanks to its special shape, the saddle seat supports an upright posture all by itself.

Aeris Oyo Product information

Aeris Oyo

Technical Data:

Product weight
9,8 kg

Seat height
48,5 cm

max. user weight
120 kg

Frame
Chrome plated steel or powder coated

Shell
Plastic with glass fibre

Product information

Awards and Certifications:



Aeris Oyo Product dimensions

Aeris Oyo

Product dimensions

Dimensions

Overall height
90,5 cm

Overall depth
66,5 cm

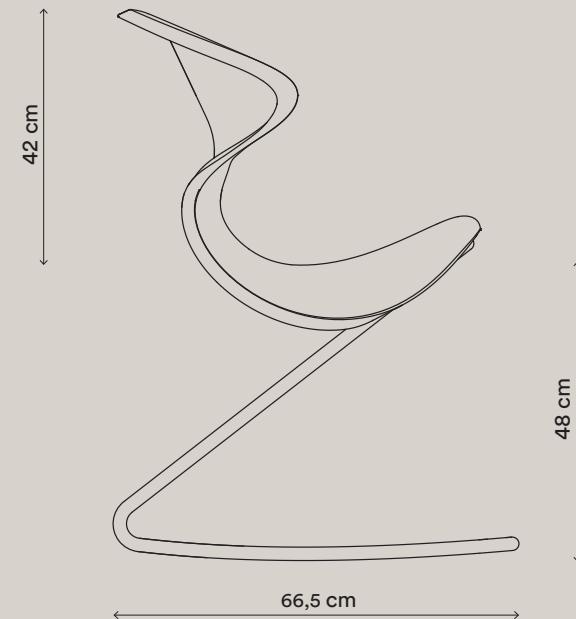
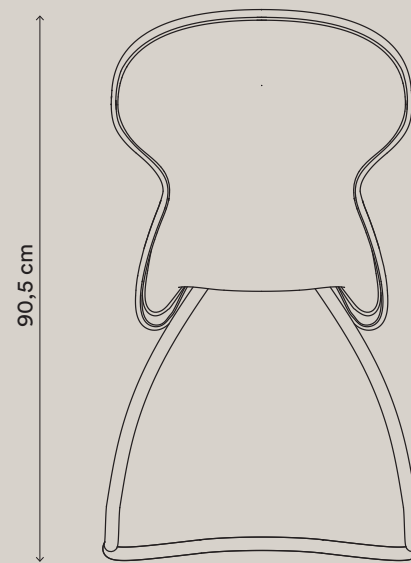
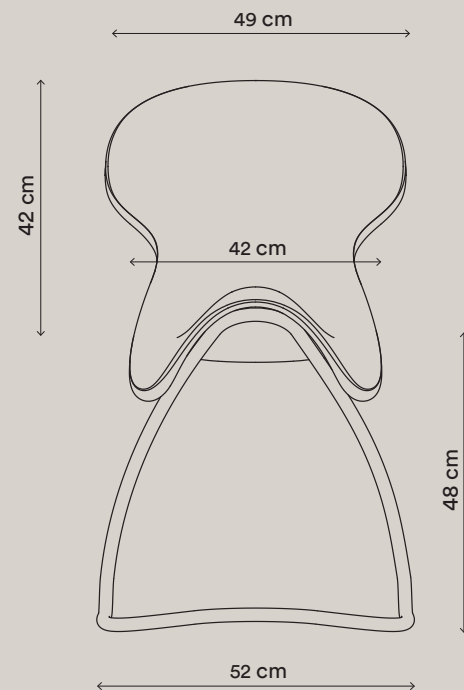
Overall width
52 cm

Seat height
48 cm

Backrest height (from seat)
42 cm

Backrest width
49 cm

Seat width
42 cm



Aeris Oyo Tender text

Aeris Oyo

Product type

Active rocking chair with saddle
seat



Tender text

Product description






The Aeris Oyo is a designer rocking chair that allows you to sit in 3 different positions - sideways, forwards or backwards. The sled base provides a rocking movement that relaxes and keeps you awake. The special shape of the saddle seat supports an upright posture.

The Aeris Oyo has a five centimetre thick foam cushion under the cover, which provides additional comfort. The universal runners of the rocking chair are suitable for both smooth floors and carpets.

Aeris Oyo TÜV-GS certificate

Aeris Oyo

TÜV-GS certificate

Zertifikat		Certificate		 TÜVRheinland®	
Zertifikat Nr. / Certificate No.	S 60150584	Blatt / Sheet	0001		
Ihr Zeichen / Client Reference	0010--21231831 005	Unser Zeichen / Our Reference	0010--21231831 005	Längstens gültig bis / Latest expiration date	16.08.2025 (day/mo/yr)
Genehmigungsinhaber / License Holder		Fertigungsstätte / Manufacturing Plant			
aeris GmbH Hans-Stießberger-Str. 2 a // 3. OG 85540 Haar Deutschland		aeris GmbH Von-Holzappel-Str. 6 86497 Horgau Deutschland			
Prüfzeichen / Test Mark		Geprüft nach / Tested acc. to			
 		DIN EN 16139/03.14			
Zertifiziertes Produkt (Geräteidentifikation) / Certified Product (Product Identification)				Lizenzentgelte - Einheit / License Fee - Unit	
Stuhl					
Freischwinger-Schaukelstuhl mit Sattelsitz "Aeris Oyo"				S	
Freischwingergestell: aus verchromtem, gebogenem Stahlrohr (Ø 22 mm; Gestellrohrwandung 3 mm) und Sitzunterkonstruktion aus zwei verchromten Stahlrohren (Ø 12 mm). Sattelsitz ist mit vier Inbusschrauben mit dem Gestell verbunden. Sitzschale aus Kunststoff, gepolstert und mit Stoff bezogen. Die Unterseite des Gestells ist mit Gleiterleisten aus Kunststoff bestückt.					
Alle sicherheitsrelevanten Anforderungen der DIN EN 16139/03.14 Belastungsstufe 1 sind erfüllt.					
Ersatz für GS-Zeichen S 60101271					
5					
Dem Zertifikat liegt unsere Prüf- und Zertifizierungsordnung zugrunde. Produkt und Fertigungsstätte erfüllen § 20 und § 21 des Produktsicherheitsgesetzes. This certificate is based on our Testing and Certification Regulation. Product and production fulfill par § 20 and § 21 of the Product Safety Law.					
TÜV Rheinland LGA Products GmbH, Tillystraße 2, 90431 Nürnberg Tel.: +49 221 8116-1371 e-mail: cert-validity@de.tuv.com Fax: +49 221 8116-3935 http://www.tuv.com/safety					
Ausstellungsdatum / Date of Issue: 17.08.2020 (day/mo/yr)				Zertifizierungsstelle  K.-H. Heider 	

Post-Consumer-Polyester Bezug

Always remove stains as quickly as possible before they have penetrated the fibres.

Optimal treatment is with lukewarm water and pH-neutral soap foam. Pre-treat oil and grease stains with ethyl alcohol (spirit).

After each cleaning, treat with clean water. Never use cleaningagents containing.

The seat may only be treated when damp, not wet, otherwise the upholstery under the fabric may be damaged under the fabric can be damaged. Therefore, please use only a little water and apply use only small quantities of the cleaning agent.

To avoid edges, please always treat from the edge to the centre.

Attention! Do not place the Oyo on the edges of the seat shell when cleaning, otherwise the cover may be damaged. cleaning petrol/acetone etc. can dissolve foam when soaked. Take care with naked flames due to fire hazard. Inhalation is dangerous.

Cleaning with petrol/acetone etc. can dissolve foam if over applied.Do not saturate. Use a little amount of acetone at a time – Large quantities can cause irreparable damage to the foam. Be careful Acetone is flammable, so keep it away from live flames. Inhalation is dangerous so use in a well ventilated area.

Felt cover

As a genuine natural product made from 90% wool and with a stain-resistant structure, the cover should ideally be vacuumed regularly using a soft vacuum nozzle only.

Cleaning the frame

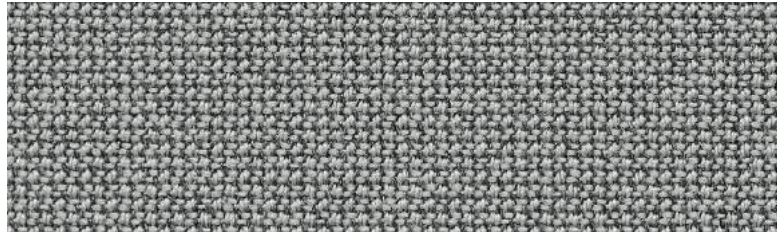
Please only clean the frame with a dry microfibre cloth.

If necessary, wipe with warm water, pH-neutral soap and a lint-free cloth.

Aeris Oyo Fabric sample overview

Aeris Oyo

Cura / Gabriel



Luna / Gabriel



Fabric sample overview

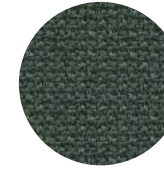
CU01, black

60111



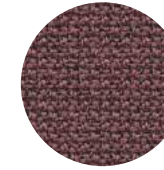
CU05, green
melange

68182



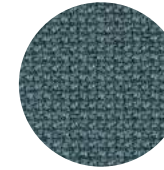
CU10, dark violet
melange

64195



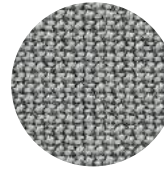
CU11, pigeon blue
melange

68187



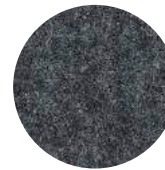
CU17, light grey
melange

60112



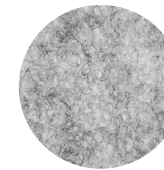
LU01, dark grey
melange

4012



LU02, light grey
melange

4013





Gabriel Cura features

The Cura fabric cover is characterized by a warm, casual aesthetic that is complemented by a lively melange effect and a soft, voluminous texture.

But this material is not only visually appealing - its high stretchability enables flexible use, making it perfect for office and lounge furniture. But what makes this material special is its sustainability. As much as 98% of the material is made from recycled post-consumer polyester, which makes a significant contribution to reducing waste. In addition, the entire material is 100% recyclable and therefore contributes to a closed-loop economy.

But this material also scores highly in terms of ecological standards. The EU Ecolabel shows that it meets strict environmental criteria and is therefore an environmentally friendly choice. It also fulfills the requirements of STANDARD 100 by OEKO-TEX®, which means that it has been tested for possible harmful substances and is considered safe for human use.

Cura-Specifications

Design no.	2480/2544		
Composition	98% post-consumer recycled polyester / 2% polyester		
Weight	g/lm 420 oz/lin.yd 55		
Width	cm 140 inches 55		
Abrasion	rubs Martindale (EN ISO 12947-2) 100.000 Double Rubs Wyzenbeek (ASTM D4157-07) (heavy duty upholstery) 100.000 ASTM D4157-07 Wyz-abrasion (heavy duty) 100k pass Abrasion test results exceeding ACT Performance Guidelines are not an indicator of product lifespan		
Pilling	scale 1-5, max. 5 - EN ISO 12945-2 ASTM D3511 Pilling	pass	4-5
Light fastness	scale 1-8, max. 8 - EN ISO 105-B02 AATCC 16 Light fastness	pass	5-8
Rubbing fastness	scale 1-5, max. 5 - EN ISO 105x12 (dry/wet) AATCC 8 oder 116 Dry/wet crocking	pass	4-5/4-5
Care instructions	wash or dry cleaning P(W) Cura is made of polyester which is a material suited for environments with special requirements for cleaning.  40°C shrinkage max. 1%.  60°C shrinkage max. 2%.		
Flammability	BS EN 1021 1&2 Cigarette and Match CA TB 117-2013 ASTM E 84 Class 1 Will also pass other flammability standards. Flame retardant performance is dependent upon the foam used. Contains no flame retardant chemicals.		
Environment	OEKO-TEX® STANDARD 100 EU Ecolabel		

Gabriel Luna Eigenschaften


If you are looking for a fabric that creates a very cosy atmosphere, then Luna is the perfect choice. This environmentally friendly material is characterised by its remarkable abrasion resistance and promises long-lasting pleasure with your seating furniture.

A special feature of the Luna upholstery fabric is its ability to make stains and dirt virtually invisible, making it an excellent option for all households with children or pets. You no longer have to worry about unsightly stains spoiling your seat cover.

The fabric also fulfils important environmental standards, such as the EU Ecolabel and the STANDARD 100 by OEKO-TEX®, which means that it has been tested for harmful substances and found to be harmless.

Luna also fulfils the Möbelfakta requirements, which underlines its quality and durability.

Luna-Specifications

Design no.	2393		
Composition	90% New Zealand wool / 10% polyamide		
Weight	g/lm 680 oz/lin.yd 21,93		
Width	cm 140 inches 55		
Abrasion	rubs martindale (EN ISO 12947-2) 70.000 rubs martindale (ASTM D4966-02) (heavy duty upholstery) 100.000 ASTM D4966 Martindale (heavy duty) pass Abrasion test results exceeding ACT Performance Guidelines are not an indicator of product lifespan		
Pilling	scale 1-5, max. 5 - EN ISO 12945-2 ASTM D3511 Pilling	pass	3-4
Light fastness	scale 1-8, max. 8 - EN ISO 105-B025-6 AATCC 16 Light fastness	pass	
Rubbing fastness	scale 1-5, max. 5 - EN ISO 105x12 (dry/wet) AATCC 8 oder 116 dry-/wet-Crocking	pass	4-5/4-5
Care instructions	dry cleaning P(S) 		
Flammability	BS EN 1021 1&2 Cigarette and Match BS 5852 Part 1 0,1 Cigarette & Match, The Furniture and Furnishing Regulations 1988 ÖNORM A3800-B2-B3825-Q1 UK CA TB 117-2013 Class Uno UNI 9175 Class 1 I EMME Will also pass other flammability standards. Flame retardant performance is dependent upon the foam used. Contains no flame retardant chemicals.		
Environment	OEKO-TEX® STANDARD 100 EU Ecolabel		

Cura / Gabriel

Luna / Gabriel

Gabriel A/S
Hjulmøgevej 55
9000 Aalborg, DENMARK



DTI TEKSTIL
TEKNOLOGISK INSTITUT
GREGERSSENSVEJ
2630 TAASTRUP, DENMARK

Certificate

OEKO-TEX® STANDARD 100

Gabriel A/S
is granted the OEKO-TEX® STANDARD 100 certification
and the right to use the trademark.

SCOPE
Woven and knitted upholstery fabrics of 100% polyester.; Woven des. Event, Event Screen+, Step, Step Screen, Step Melange, Step Melange Screen, Twist, Twist Melange, Go Check, Go Uni, Go Couture, Spin & Contour. Knitted des. Atlantic, Flex, Sync, Sync EU, Athlon & Athlon Plus; upholstery fabrics Step, Step Screen, Step Melange, Step Melange Screen, Twist, Twist Melange, Go Check, Go Uni, Go Couture, Spin & Sync EU are made of yarns with flame retardant properties accepted by OEKO-TEX®



STANDARD 100 876-13601 DTI

This certificate 876-13601 is valid until 31.08.2024.

SUPPORTING DOCUMENTS
 ✓ Test report: 136-51
 ✓ Declaration of conformity in accordance with EN ISO 17050-1 as required by OEKO-TEX®
 ✓ OEKO-TEX® Terms of Use (ToU)

Anette Werner
Anette Werner
Senior Consultant Textiles

Maria Rasmussen
Maria Rasmussen
Consultant

Further compliance information (REACH, SVHC, POP, GB18401 etc.) can be found on oeko-tex.com/en/faq.
The certificate is based on the test methods and requirements of the OEKO-TEX® STANDARD 100 that were in force at the time of evaluation.

Taastrup, 2023-08-14



OEKO-TEX Service GmbH, Gunterstrasse 23, CH-8002 Zurich

Gabriel A/S
Hjulmøgevej 55
9000 Aalborg, DENMARK



DTI TEKSTIL
TEKNOLOGISK INSTITUT
GREGERSSENSVEJ
2630 TAASTRUP, DENMARK

Certificate

OEKO-TEX® STANDARD 100

Gabriel A/S
is granted the OEKO-TEX® STANDARD 100 certification
and the right to use the trademark.

SCOPE
Piece dyed, yarn dyed and fiber dyed upholstery and screen fabrics woven and non-woven of 100% wool, wool/polyamide 95-80/5-20%, wool/polyamide/antistatic fibres 93-94/4-5/2%, wool/linen/polyamide 58/35/7%, wool/polyester/cotton 38-86/11-40/7-22%, wool/polyester/polyamide 48-54/43-44/2-9%, wool/polyester 84/16%, wool/cotton 80/20%, cotton/polyester 80-86/14-20%; des. Luna Fleur WO/PA 90/10% with all-over embroidery.



STANDARD 100 1076-17401 DTI

This certificate 1076-17401 is valid until 30.06.2024.

SUPPORTING DOCUMENTS
 ✓ Test report: 174-48
 ✓ Declaration of conformity in accordance with EN ISO 17050-1 as required by OEKO-TEX®
 ✓ OEKO-TEX® Terms of Use (ToU)

Anette Werner
Anette Werner
Senior Consultant Textiles

Allan Jensen
Allan Jensen
Consultant

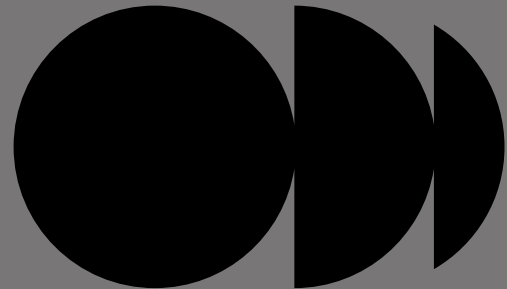
Further compliance information (REACH, SVHC, POP, GB18401 etc.) can be found on oeko-tex.com/en/faq.
The certificate is based on the test methods and requirements of the OEKO-TEX® STANDARD 100 that were in force at the time of evaluation.

Taastrup, 2023-05-30



OEKO-TEX Service GmbH, Gunterstrasse 23, CH-8002 Zurich

Never just sit.



Aeris GmbH
Hans-Stießberger-Straße 2a
85540 Haar
Germany

Tel.: +49 (0) 89 - 900506 - 0
info@aeris.de
en.aeris.de